

# BILAT-Workshop: Atlantic Ocean Research Detecting New Ways of Information Exchange for Enhanced Collaboration

## Canada/EU Collaboration Through the Marine Institute

“Experience That Works”

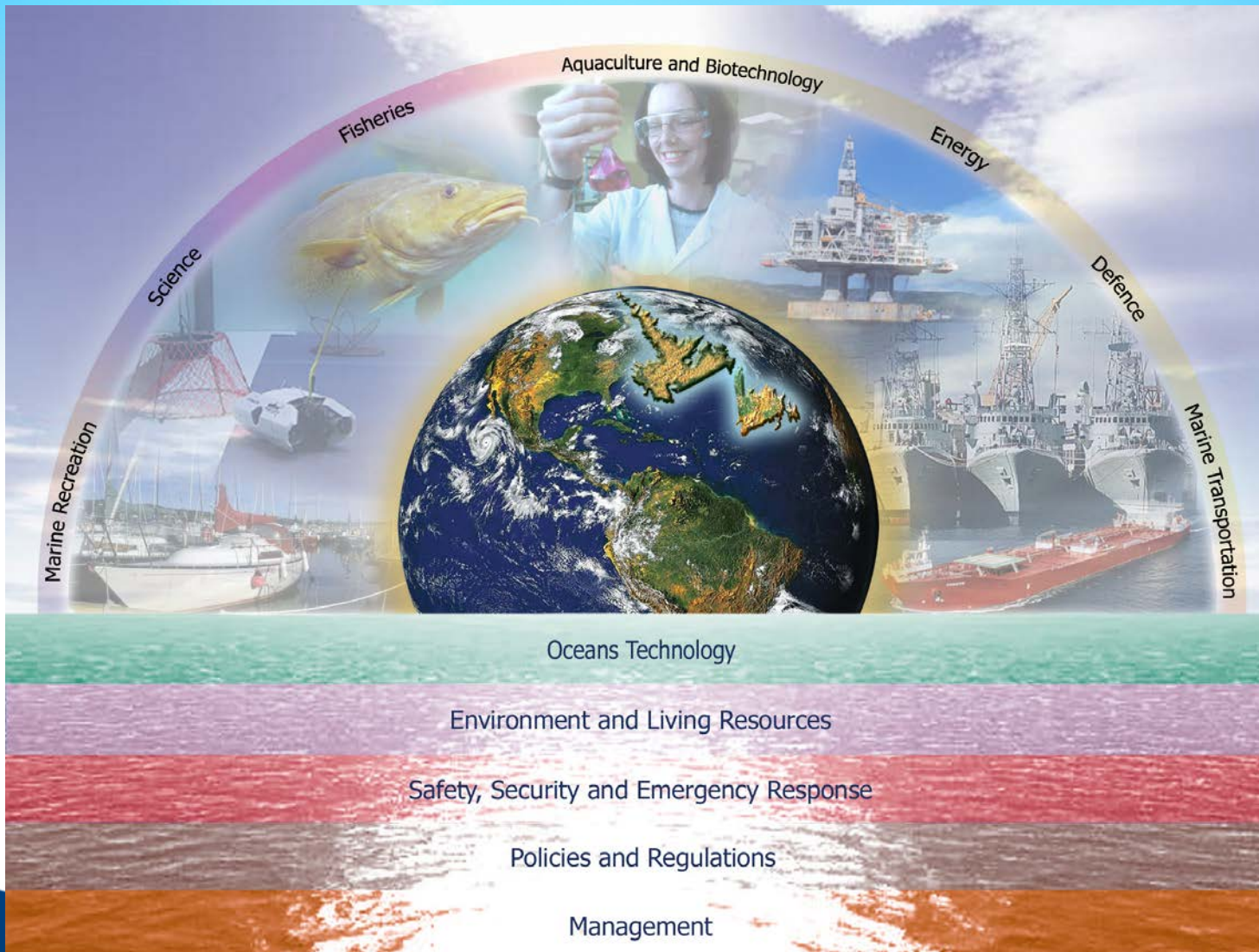
Rome  
October 06, 2014

Office of Research &  
Development



# A World Ocean Institute

*Setting the  
Standard for  
Education,  
Training,  
innovation &  
Research*



Office of Research &  
Development

## School of MARITIME STUDIES



Master of Maritime Management  
Bachelor of Maritime Studies  
Nautical Science  
Marine Engineering  
Naval Architecture  
Marine Systems Design  
Marine Safety  
Fire Rescue  
Marine Electronics

## School of FISHERIES



Master of Marine Studies  
Aquaculture  
Food Technology/Safety  
Harvesting  
Marine Environmental  
Coastal Zone Management  
Water Quality

## School of OCEAN TECHNOLOGY



Master of Technology  
Bachelor of Technology  
Ocean Instrumentation  
Ocean Mapping  
Underwater Vehicles

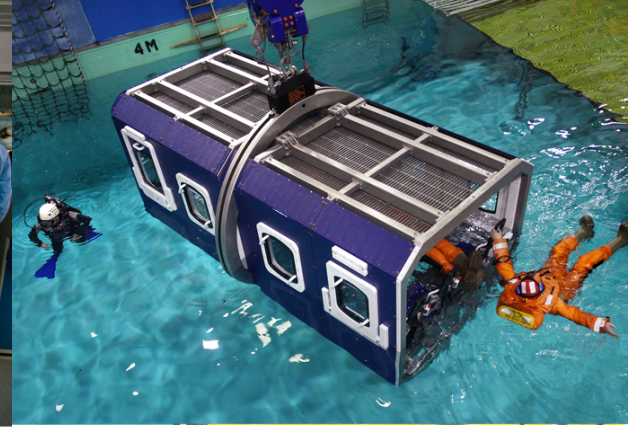
# Our Centres



Centre for Sustainable Aquatic Resources



Centre for Marine Simulation



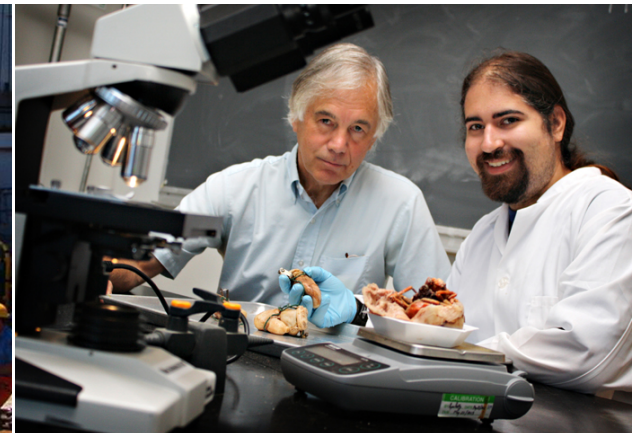
Offshore Safety and Survival Centre



Centre for Aquaculture and Seafood Development



Centre for Applied Ocean Technology



Centre for Fisheries Ecosystems Research

## Key Priority With Europe

### Background

- Key neighbour with Europe on the rim of the North Atlantic
- 500 year maritime history with strong economic & cultural links
- One of the most productive marine ecosystems on the planet
- Western Atlantic gateway to the Arctic
- Oceanographic & ecological changes in the Atlantic ocean will have profound global impact

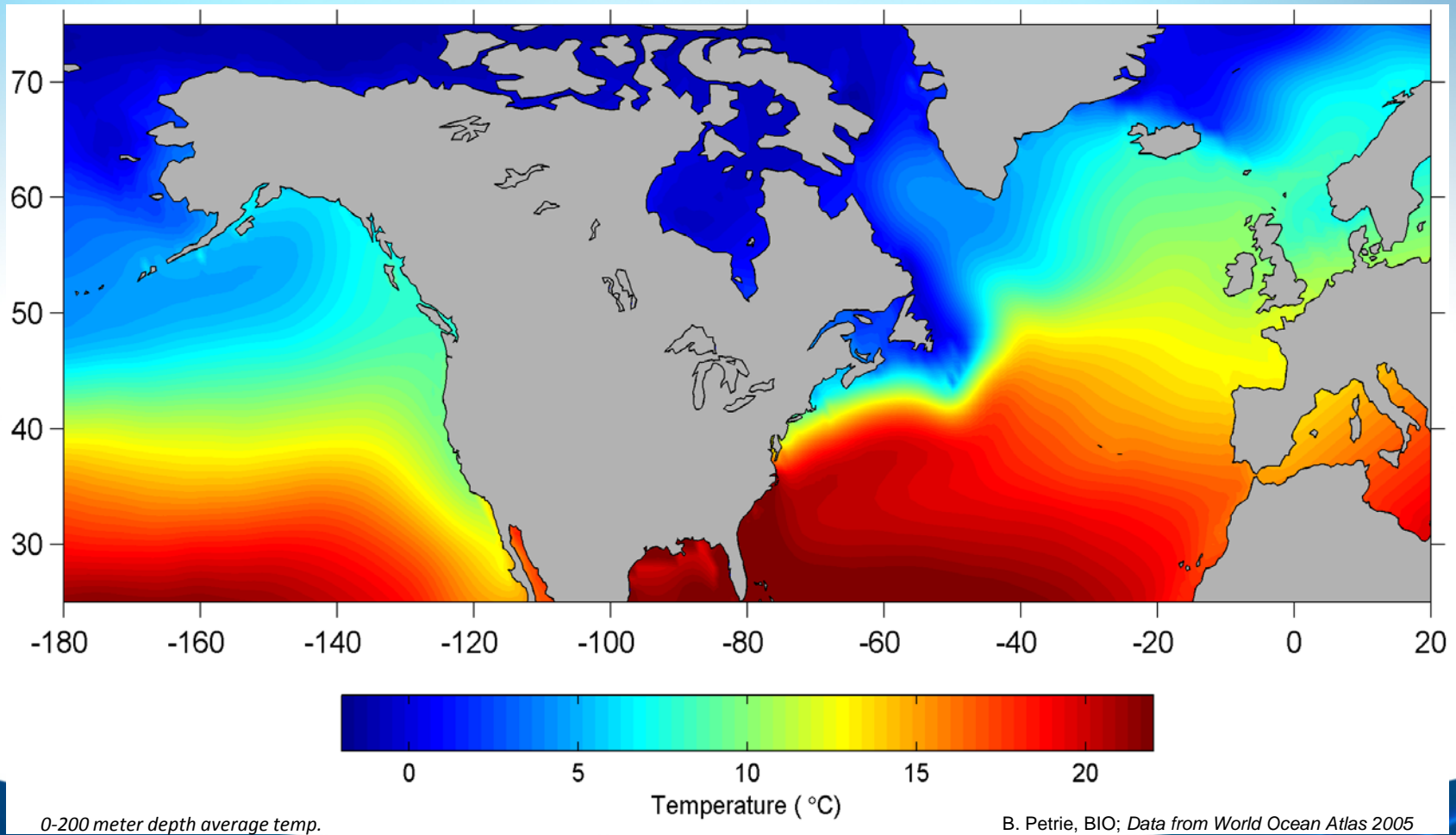
### Key Priority

- Understanding the dynamic ecology & the oceanography of the Atlantic Ocean is critical to support sustainable & integrated management.

*“Better Information – Better Decisions”*

# Key Priorities With Europe

Newfoundland & Labrador: In the Arctic Ocean



Office of Research &  
Development



# MI has a History of Collaborative with Europe

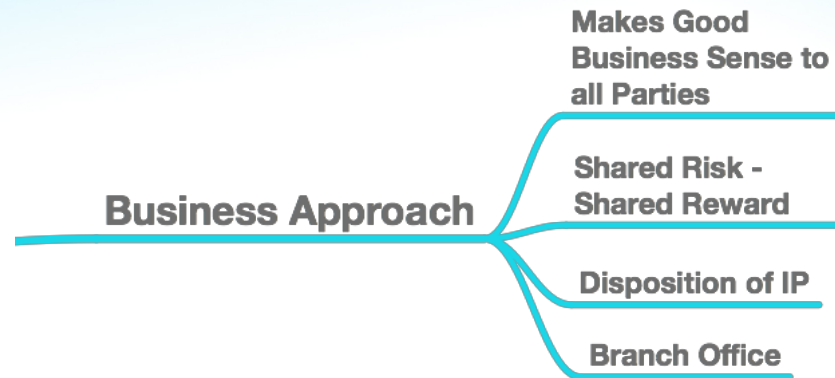
- **Irish Seabed Survey** – Irish Marine Institute, Geological Survey of Ireland
- **Reduce Seabed Impact of Bottom Trawls** - Vonin Ltd. in the Faroe Islands
- **Operational Oceanography during north Atlantic Transits of the RV Celtic Explorer** - Irish Marine Institute, Dublin City University
- **SAFEGUARD - Development of Ship Based Evacuation Models** – FP7, U of Greenwich, BMT, Principa, Safety at Sea, Color Line Marine, Minoan Lines, Royal Caribbean Int’l, Bureau Veritas, Transport Canada, RDC
- **FIRE EXIT - Evacuation Simulator for Passenger Ships** – FP5, U of Greenwich, BMT, Fleet Technologies, Grimaldi Ferries, DnV, Mettle, Aveva, AIF, PRECARN.
- **Graduate Student Placements** – UK, Norway, Ireland



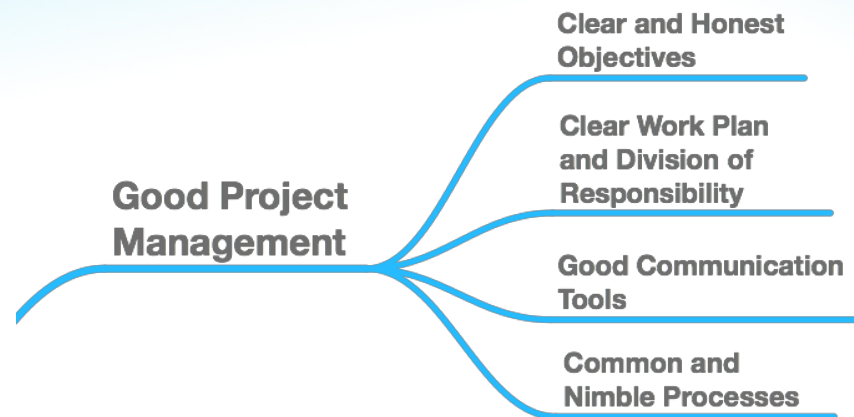










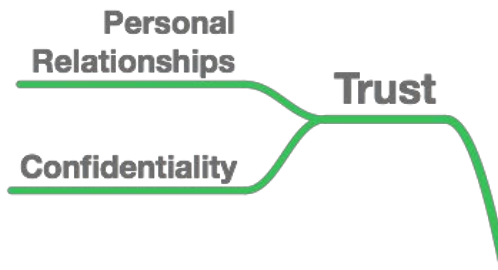




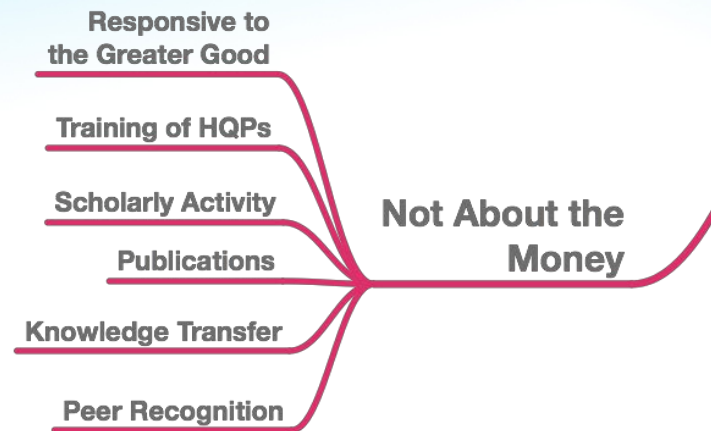














# Future Collaboration with the EU

**The Intent-** Collaborative initiatives in education, training, research and development for safe and sustainable ocean activities.

## Examples

- **Fisheries**
  - **Discardless** – H2020 SFS9 - Towards a gradual elimination of discards in European fisheries - with Danish Technical University (DTU) & 31 partners.
- **Ocean Safety**
  - **Evacuation & Emergency Planning for Passenger Ship Operations in Arctic Waters (ARCEVAC)** – Stord/Haugesund University College, Arctic University of Norway, U of Greenwich, Hurtigruten ASA, Norwegian Coastal Administration, Norwegian Joint Rescue Coordination Centre.
  - **Influence of Ship Manoeuvring on Sea Calming for Rescue Operations** – Chalmers University of Technology, Swedish Sea Rescue Society, Stena Line
- **Trans Atlantic Ocean Observation**
  - **Expanded Voyages of the Celtic Explorer** – Irish Marine Institute
  - **Linked SmartBays** – SmartBay Newfoundland (Marine Institute) to SmartBay Ireland (Irish Marine Institute & Dublin City University)

# Linked SmartBays

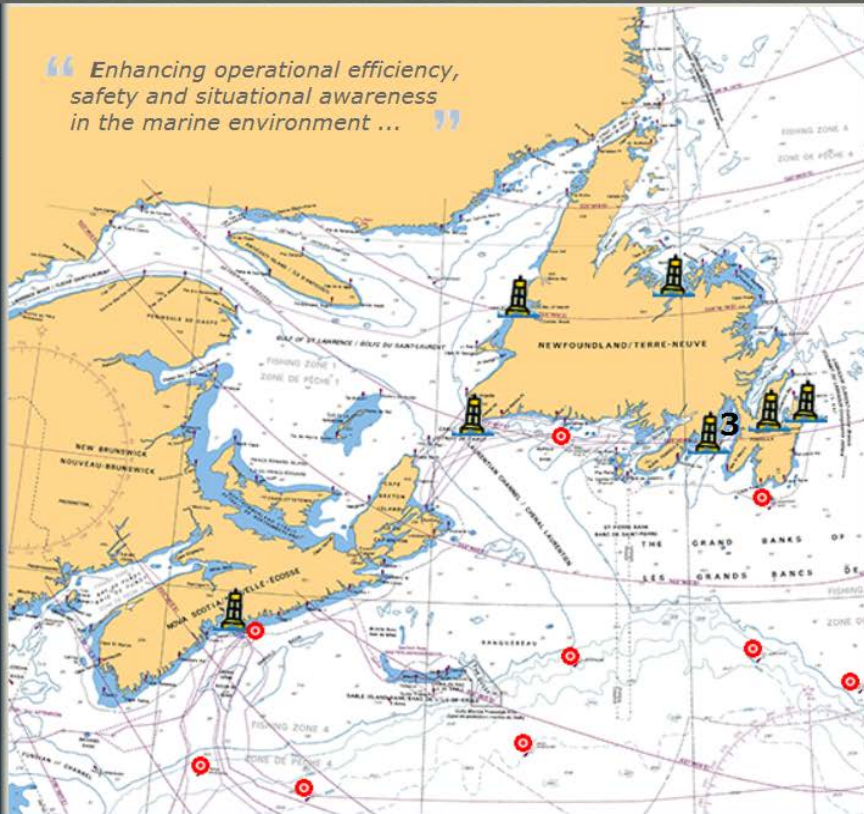


About the SmartAtlantic Alliance

Terms of Use

Contact Us

Better Information ... Better Decisions



### SmartAtlantic Notices

22.Sep.2014  
Please be advised that we are experiencing some problems with the wind direction data for the SmartBay buoy located in the Bay of Exploits. The SmartBay team is currently investigating this and hope to have the issue resolved as soon as possible. We apologize for any inconvenience this may cause.

19.Sep.2014  
We are pleased to announce the deployment of our Bay of Islands Met/Ocean buoy on Wednesday,

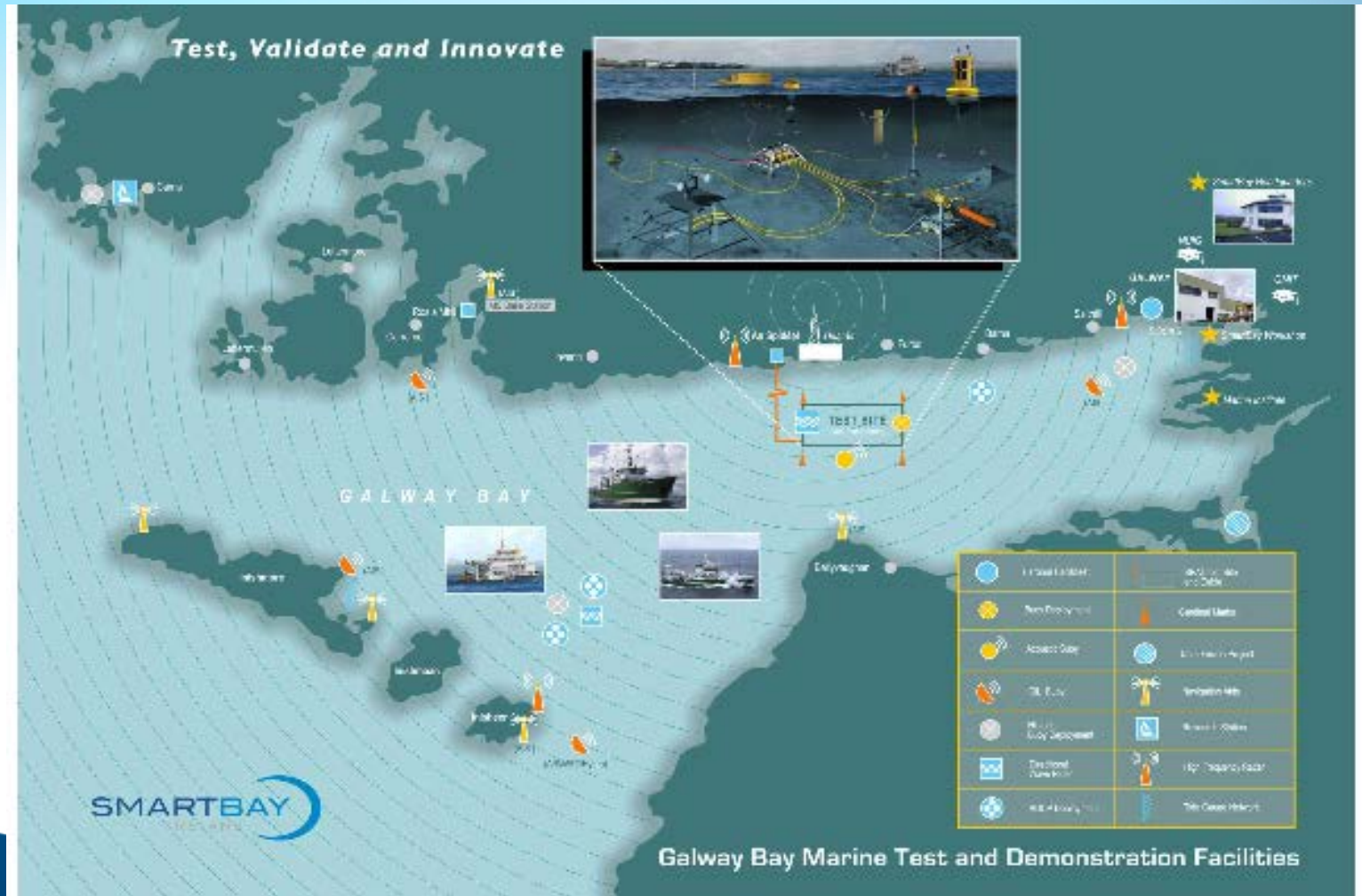
An Initiative of the Marine Institute of Memorial University of Newfoundland:

© Marine Institute of Memorial University of Newfoundland. All Rights Reserved. Terms and Conditions

Office of Research & Development



# Linked SmartBays



## Linked SmartBays

- Forms the Eastern & Western Shoulders of a nascent North Atlantic Ocean Observation System (OOS)
- SmartBay NL – the gateway to the pan north American OOS
- SmartBay Ireland – the portal to the pan European OOS
- Responsive to H2020 & the tri-lateral Galway Declaration
- The catalyst for expanded trans Atlantic collaborations between industry, government(s) & academia



## Ronald Newhook

Director – Office of Research and Development  
The Marine Institute of Memorial University

1-709-778-0766

Ron.Newhook@mi.mun.ca

“Alone we can do so little; together we can do so much.”

- *Helen Keller*