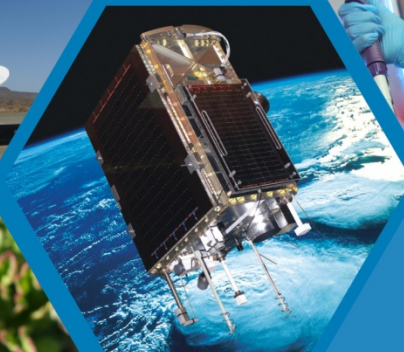


Marine Research Collaborations & Information Sharing - South Africa



science
& technology

Department:
Science and Technology
REPUBLIC OF SOUTH AFRICA

Presented by: Gilbert Siko

**Occasion: "Atlantic Ocean research - Detecting new ways of
information exchange for enhanced collaboration"**

Date: 06 October 2014



South Africa location to the global oceans →

- western edge of the South Indian Ocean
- eastern edge of the South Atlantic Ocean
- bounded by the Southern Ocean in the south

South Africa placed in a unique & position with respect to global ocean circulation

South Africa plays a key role in two (potentially three) large marine ecosystem collaborative programs

- the ASCLME in the southwest Indian Ocean
- the BCLME focused on the southeast Atlantic Ocean
- the Southern Ocean Large marine ecosystem



SA Marine Research Community

South African Network for Coastal and Oceanic Research – SANCOR

A non-statutory body that generates & communicates knowledge & advice in order to promote the wise and informed use and management of marine and coastal resources and environments



environmental affairs

Department:
Environmental Affairs
REPUBLIC OF SOUTH AFRICA



**agriculture,
forestry & fisheries**

Department:
Agriculture, Forestry and Fisheries
REPUBLIC OF SOUTH AFRICA



**National
Research
Foundation**



Benguela Current Commission BCC

Established in 2007, the Benguela Current Commission has a mandate from Angola, Namibia and South Africa to promote the integrated management, sustainable development and protection of the Benguela Current Large Marine Ecosystem (BCLME)

The BCC supported by the governments of Angola, Namibia and South Africa; GEF; & UNDP

The government of Norway provides generous funding for the BCC Science Programme and Iceland is supporting a comprehensive Training and Capacity Building initiative



BCC Information Sharing Platforms

One of the priorities of the BCC is to ensure that the information produced by its various activities is correctly managed and accessible to all the countries of the Benguela

Partnerships and collaborations have been forged with a number of data management organisations so as to ensure the utility and accessibility of data generated by the BCC. For example, partnerships have been forged with ODINAFRICA; the Marine Atlas Project; and SADC

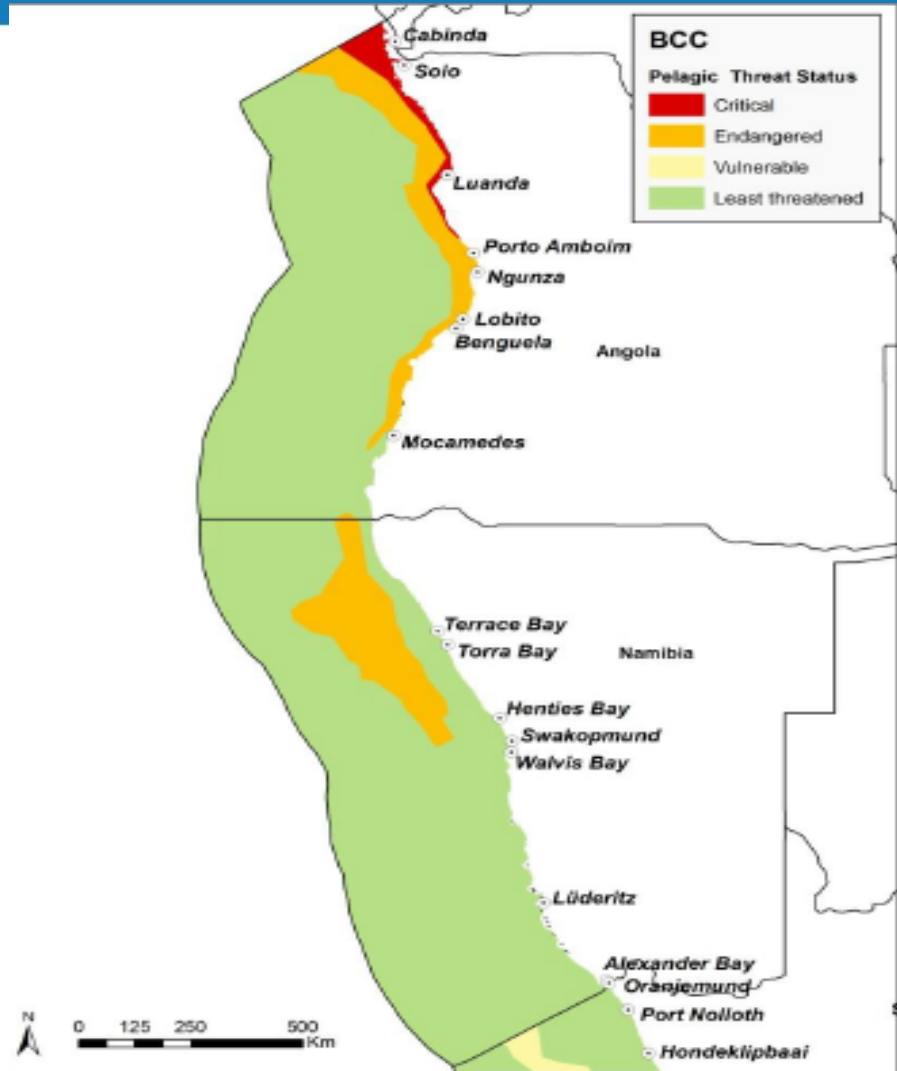
Funding from the government of Norway and the European Union, and the support of FAO's EAF-Nansen project and other partners, the BCC has managed a wide range of scientific investigations over the years



BCC Information Sharing Platforms

Funding from the government of Norway and the European Union, and the support of FAO's EAF-Nansen project and other partners, enabled a wide range of BCC scientific investigations over the years

BCC Science Annual Meetings enable research information sharing



Samaai et al. BCC 2013 Science Forum



Ma-Re Institute – UCT

The Ma-Re Institute was officially constituted in October 2006 as one of the first signature themes at UCT

- *Foster inter-disciplinary marine research projects*
- *Organize a regular seminar series in conjunction with SANCOR*
- *Act as a gateway between UCT and the outside world for marine research contracts*
- *Provide administrative support for marine research, meetings, projects and activities*
- *Form links with other bodies in the region and overseas with similar or complementary interests.*





Collaborative research Programmes

The Ma-Re BASICS Project collaborations

Includes researchers from USA, Canada, EU, Australia – Ma-Re students have benefited from interacting with researchers from these countries through Ma-Re travel support

DST-NRF SARCHI in Marine Ecology & Fisheries

focusing on three research themes: (i) transdisciplinary research into marine social-ecological systems under global change, (ii) ecosystem modelling for Management Strategy Evaluation and (iii) decision support methodology, including indicators and mediated modelling

Student international co-supervision from: Aalborg University (Denmark), Memorial University (Canada), Vancouver Island University (Canada)



Collaborative research Programmes

DST-NRF SARCHI in Ocean Climate Modelling

ICEMASA an educational & research programme providing tools for monitoring and studying exploited marine ecosystems

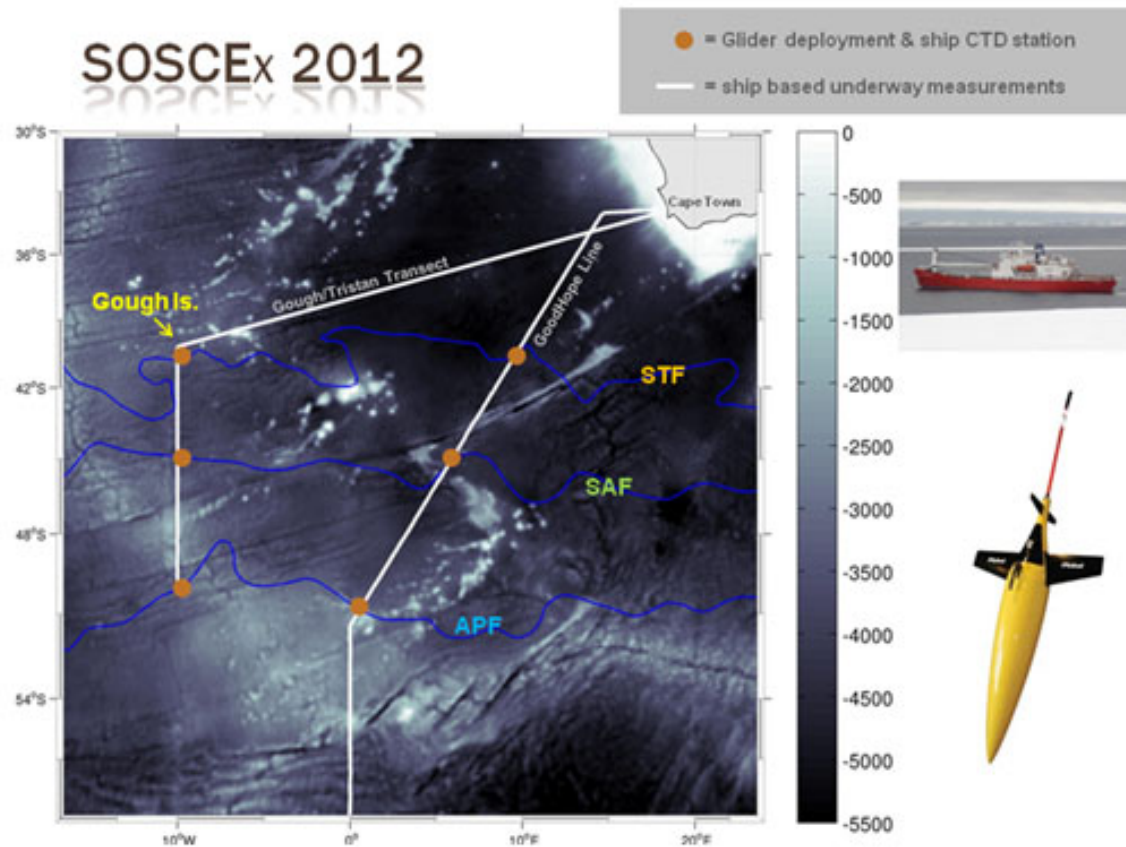
A joint project with the DEA, DAFF, ACCESS, in South Africa, and the IRD (L'Institut de Recherché pour le Developement), UBO (University of Brest) & CNRS in France

Nansen Tutu Centre established through collaborations between ACCESS, the Nansen Environmental & Remote Sensing Centre (NERSC), the Institute of Marine Research Centre for Development Cooperation in Fisheries (IMR/CDCF), the University of Bergen and Princeton University

Collaborative research Programmes

SOCCO - multi-institutional, South African initiative aiming to understand the link between climate and the carbon cycle in the Southern Ocean

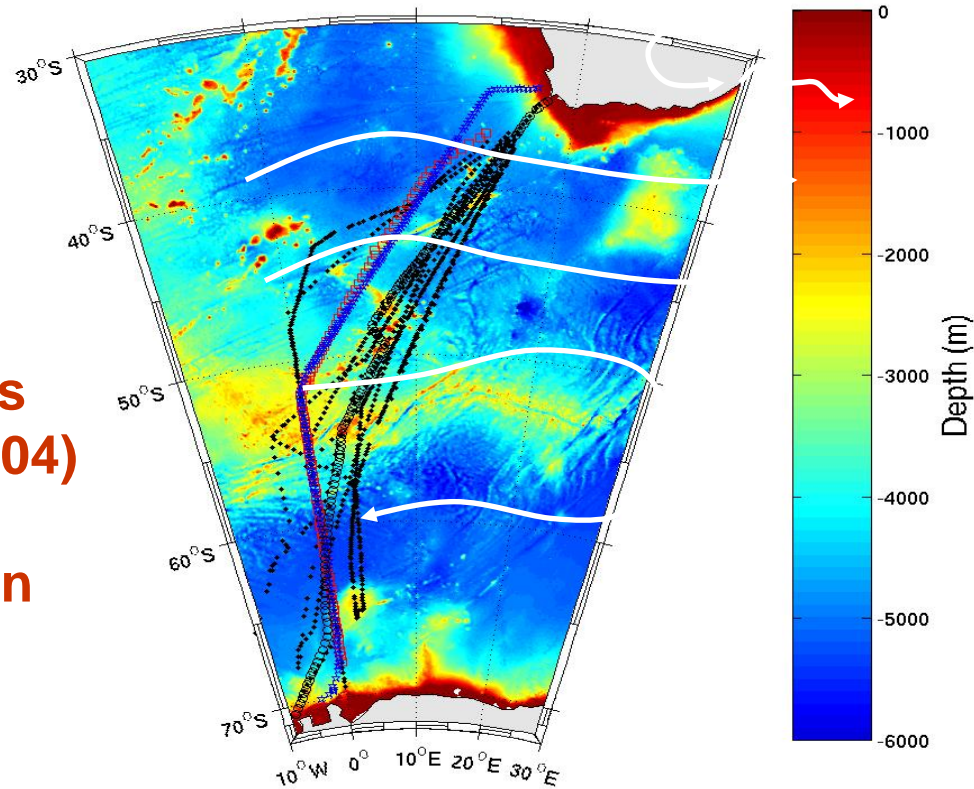
Projects:



Collaborative In International Research Programmes

SAMOC- Role of SA

- ..Summer season
- ..Underway Observations
- ..>20 transects (since 2004)
- ..>150 Floats deployed
- ..> 40 students have been trained



Ansorge et al.

New International Projects

NRF-SAEON – ASCA focuses the Greater Agulhas Current System, which effectively links all three SA marine environments, playing the primary role of heat transfer in the region complementary interests.

Result from new collaborations with researchers from USA and Netherlands

New collaborations should also be based on data access





Dankie

Thank you